

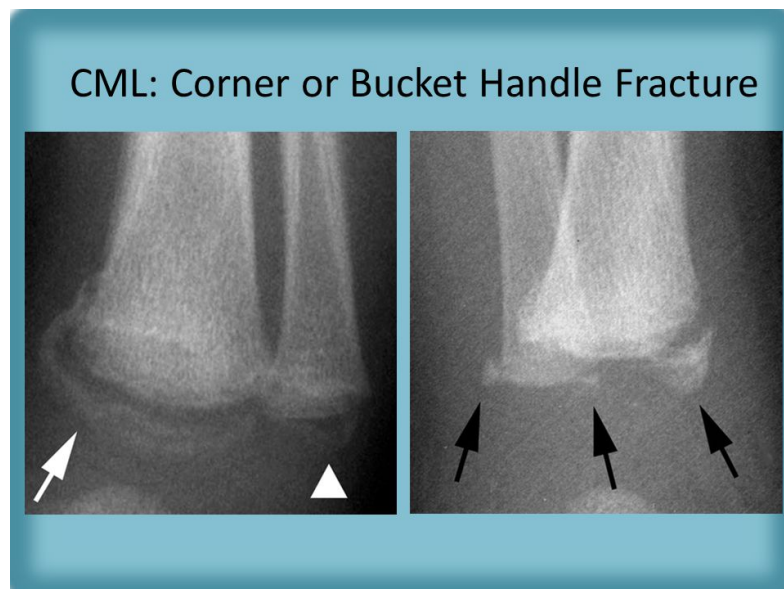


What is shown on this X-ray?

On discovering this X ray what should you do?

The X-ray shows a **metaphyseal corner fracture** or bucket handle fracture of the left knee. These fractures are **pathognomonic for child abuse**.

- Caused by shaking of the victim or forcefully pulling the limb.
- Back and forth motion causes multiple microfractures across the metaphysis with an orientation perpendicular to the long axis of the bone.
- Most often occurs in a child less than 2 years old as the child must be small enough to be shaken and too young to protect their limbs.



Roughly 50% of physically abused children with fractures will have more than one fracture.

Other concerning fractures:

- Multiple fractures of different ages
- Rib and spinal fractures
- Fractures in non-mobile infants
- Long bone fractures in children <3 years old
- Epiphyseal separation

What to do next:

- Alert your consultant to the issue.
- Discuss with the medical team at the Royal Children's Hospital regarding admission as a place of safety and for further medical and social investigation – unless the child needs immediate orthopaedic management (unlikely) in which case refer to the paed ortho team.
- Fill in a Shared Referral form.

If the attending adult tries to remove the child try to convince them to stay. Call the police if the adult successfully removes the child from hospital.