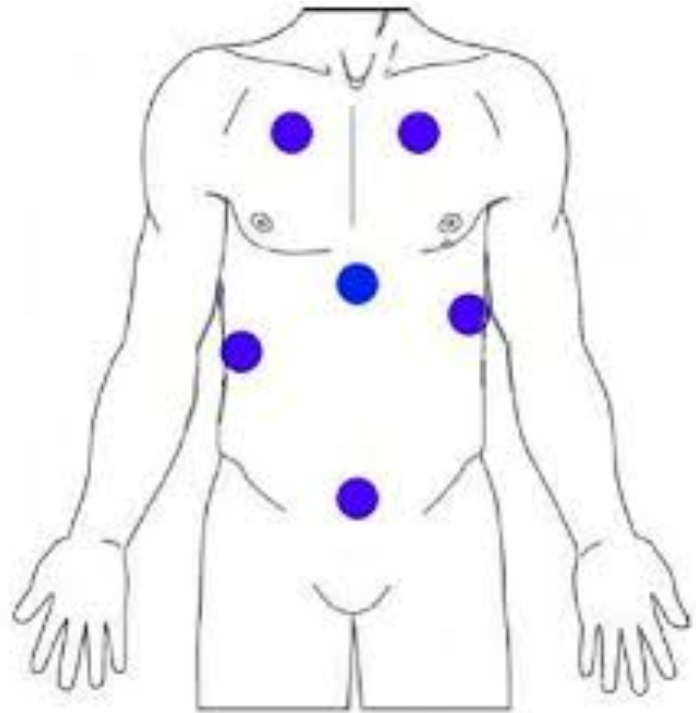


TRAUMA

FAST



GENERAL THEORY

Black = fluid (blood in context of trauma)

White = soft tissues/organs

Probe marker orientated to the patient's right

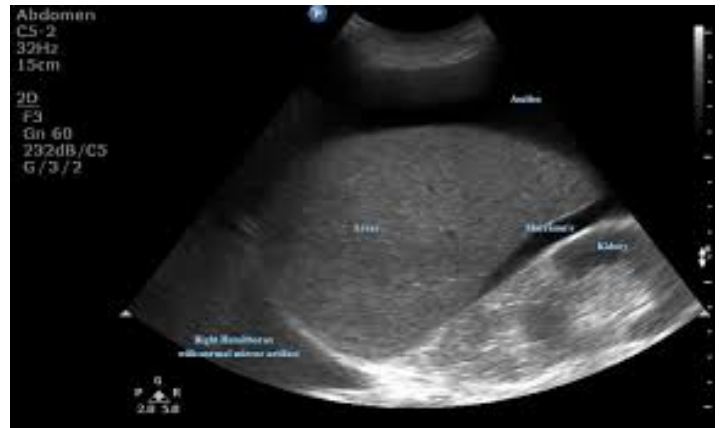
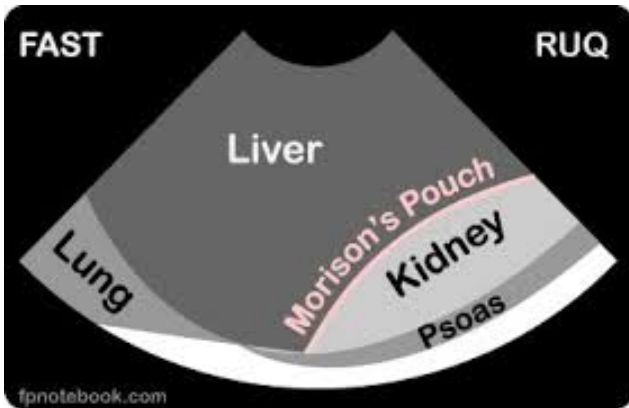
Potential fluid space

- Pericardium
- Morrison's pouch
- Splenorenal angle
- Pouch of Douglas

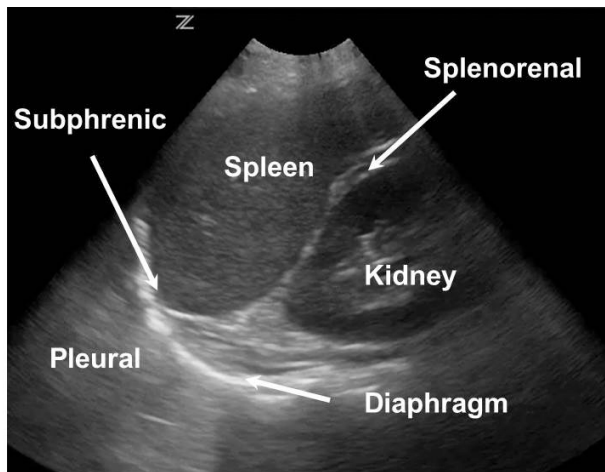
PERICARDIUM



RUQ



LUQ



PELVIC

