

## MUSCULOSKELETAL

### IMAGING

#### Beware the "Groin Strain" in Children

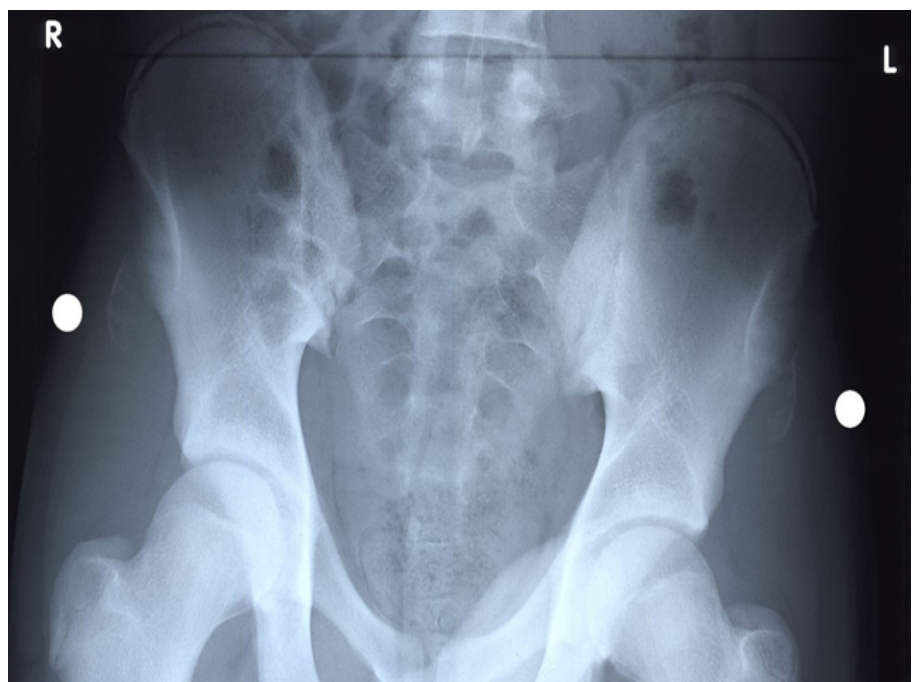
If a child presents with groin or pelvic pain after physical activity or sport always consider the possibility of an avulsion fracture. Although a groin muscle strain can occur in children this is a diagnosis after excluding an avulsion fracture on x-ray.

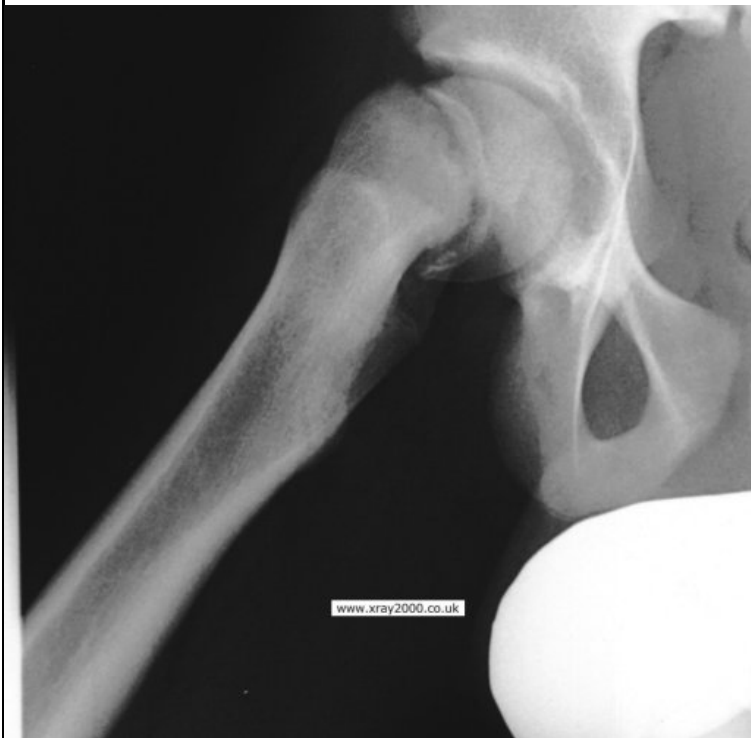
Groin pain after activity can also be a presentation of Perthes or a SUFE.



Avulsion # Ischial  
Tuberosity  
(Hamstring origin)

Bilateral ASIS avulsion #'s  
(Origin of Sartorius muscle)





Slipped Upper Femoral Epiphysis (SUFE)



Avulsion # AIIS  
(Origin of Rectus Femoris muscle)



Perthes disease