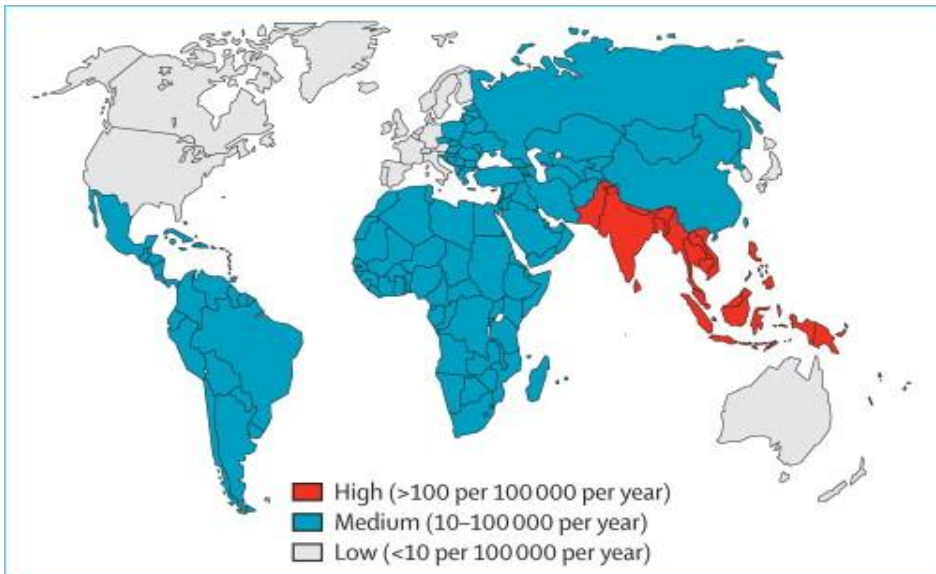


# INFECTIOUS DISEASES

## ENTERIC FEVER

**Enteric fever:** a systemic illness characterised by fever and abdominal pain caused by *Salmonella typhi* (typhoid fever) or *Salmonella paratyphi* (paratyphoid fever).



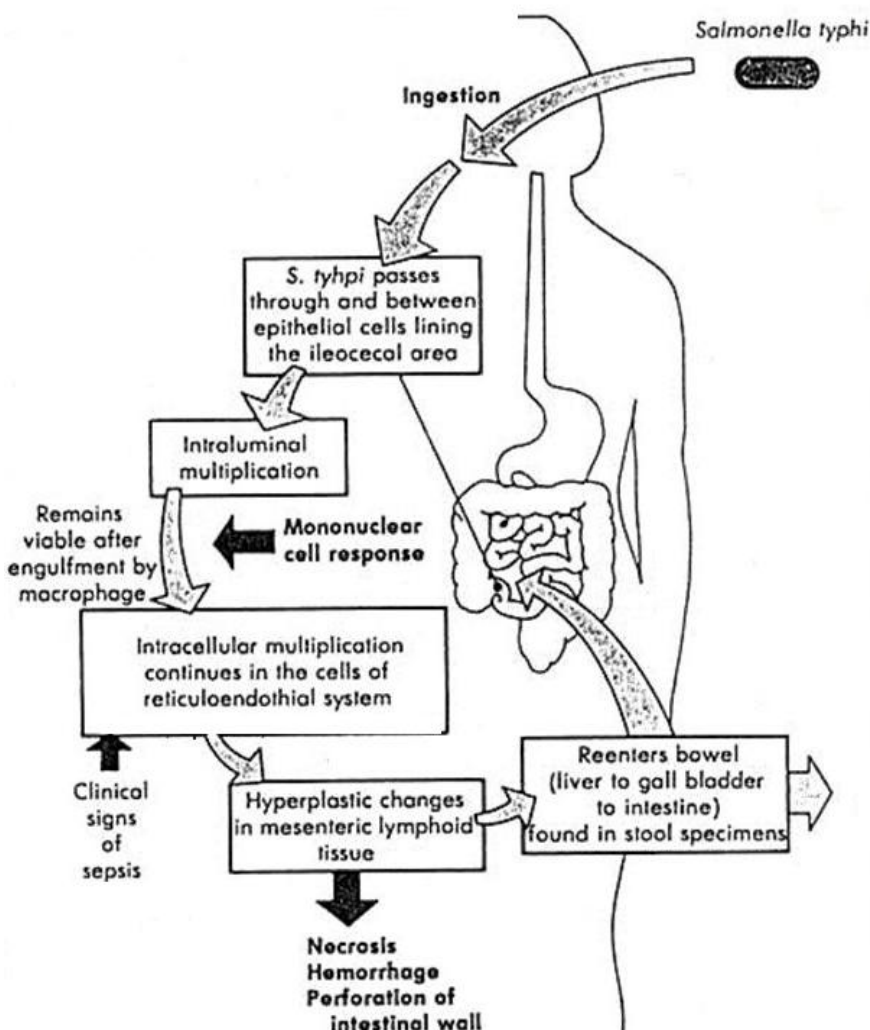
**Incubation:** 5-21 days

**Host:** humans

**Transmission:** faeco-oral

**Distribution:** areas of poor sanitation or overcrowding

### Pathogenesis



Intracellular survival may lead to relapses.

Chronic asymptomatic carriage may lead to widespread transmission with public health consequences.

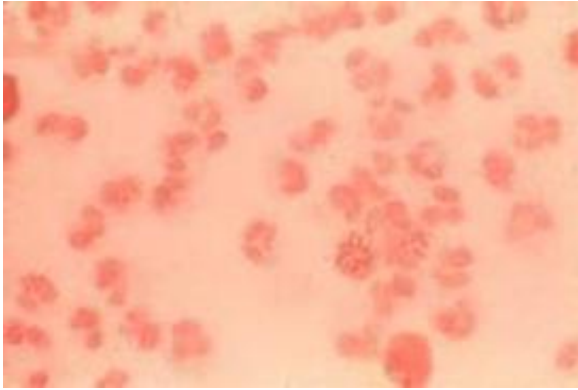
Chronic carriage is associated with a 6 fold increase in risk for **hepatobiliary malignancy**.

**Untreated:**

- 10% die
- 10% relapse
- 4% chronic carriage

## Clinical Features

**Week one:** fever (rarely rigors) and relative bradycardia.



### Week two:

Abdominal pain

Rose spots (macules on trunk and abdomen).

**Week three:** hepatosplenomegaly, intestinal bleeding, perforation (due to ileocaecal lymphatic hyperplasia), septic shock.

**Other manifestations:** constipation, diarrhoea, headache, meningitis, encephalopathy, myelitis, arthralgias, myalgias.

## Investigations

Leucocytosis/leucopenia, anaemia, deranged LFTs

Blood culture, stool culture, urine culture, bone marrow culture

## Treatment

Intravenous fluids and other supportive therapy.

Discuss with general surgery and perform an erect CXR if there is an acute abdomen.

You may suspect enteric fever in A&E but it is unlikely that you will be able to confirm the diagnosis – discuss all suspected cases with the ID doctor on call. Options include:

Oral ciprofloxacin (but resistance is increasing)

Severe disease: IV ciprofloxacin or IV ceftriaxone

Encephalopathy: IV dexamethasone in addition to antibiotics

## Prevention

There are two vaccines available for typhoid fever prevention. They are incompletely effective against *S. typhi* and ineffective against *S. paratyphi*. They are advised for travel to high prevalence regions and repeated exposure requires further vaccination.