

## ENT

### EAR PAIN

The causes of ear pain are varied and can be divided into primary otalgia (directly related to the ear) and referred otalgia (referred pain from another site).

External Ear Causes	Middle Ear Causes	Referred Pain
Otitis externa	Otitis media	Tonsillitis/sinusitis
Foreign body	Otitis media with effusion	Trigeminal neuralgia
Trauma	Acute mastoiditis	Dental pathology
Impacted cerumen	Barotrauma	TMJ dysfunction
Bullous myringitis	Acute obstruction of Eustachian tube	Parotitis
Furunculosis	Neoplasm	Cervical spine pathology
Herpes zoster	Trauma	Salivary gland calculus/infection
Neoplasm		
Perichondritis of pinna		

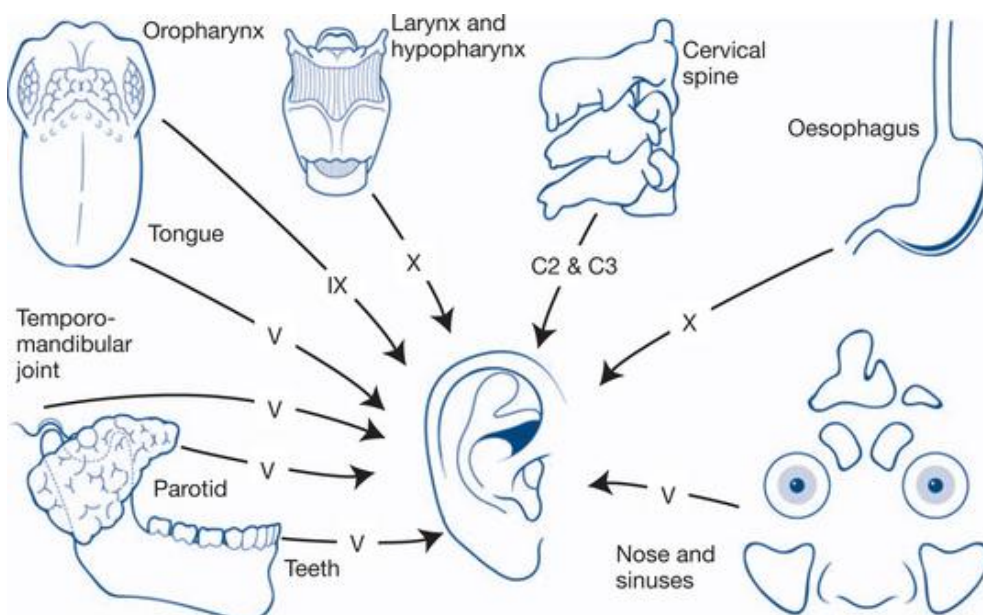
#### History

Pain (location character, duration)  
Hearing loss  
Discharge  
Systemic symptoms  
Trauma

#### Examination

Temperature and observations  
External ear (pinna, mastoid)  
Auroscopy  
Lymph nodes

**If ear itself is unremarkable consider referred pain and examine as appropriate:**



**Tenderness on manipulation of the ear** suggests external ear pathology eg. otitis externa.

**Ear discharge indicates:**

- Otitis externa
- Otitis media with perforation
- Traumatic rupture of tympanic membrane (eg cotton bud/base of skull fracture)

**If fever is present consider:**

- Otitis media (below left)
- Mastoiditis (below middle)
- Dental abscess (below right)
- Meningitis (as a complication of otitis media)
- Cellulitis



**Following head injury consider base of skull fracture:**

- Panda Eyes (below right)
- Subconjunctival haemorrhage
- Haemotympanum (below left)
- Perforated tympanic membrane (below middle)
- CSF otorrhoea/rhinorrhoea
- Symptoms and signs of intracranial injury

